

# FILTER HOUSINGS



## *Keystone Filter Division*

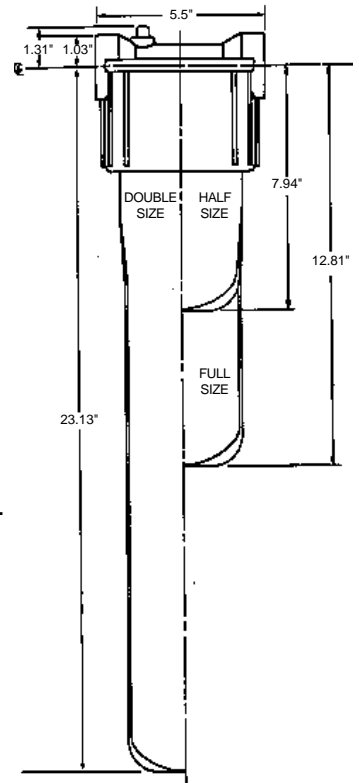




# Standard Housings

Standard housings offer the following:

- White talc reinforced polypropylene head with blue talc reinforced or clear styrene acrylonitrile (SAN) bowl.
- Standard 3/4" NPT connections.
- Securely retained Buna "N" O-Ring to ensure effective sealing by positive tangential contact; eliminates accidental misplacement; provides longer life.
- Positive head to bowl "stop" to prevent bowl overtightening.
- Available from stock with or without pressure relief vent button.
- Custom colors available by special order.
- Mounting bosses in head for available bracket.
- Accepts industry standard cartridge size: 2 3/4" O.D. x 1" I.D. x 9 3/4" (full length), 4 7/8" (half size) and 20" (double length).
- Full testing to industry standards of the Water Quality Association for burst pressure, water tightness and fatigue resistance.



The Model 21N and 23N filter housings are tested and certified by NSF International under ANSI/NSF Standard 42 for material and structural integrity requirements



MODEL NUMBER	MAXIMUM OPERATING TEMP. °F (°C)	MAXIMUM OPERATING PRESS. PSI* (KCSH)	SHIPPING WEIGHT (LBS)**	SIZE	HOUSING MATERIAL AND STYLE
11N	125 (52)	150 (10.5)	3.3	Full	White Polypro Head, Blue Polypro Bowl
12N	125 (52)	150 (10.5)	2.6	1/2	White Polypro Head, Blue Polypro Bowl
13N	125 (52)	150 (10.5)	4.5	Double	White Polypro Head, Blue Polypro Bowl
21N	125 (52)	150 (10.5)	3.3	Full	White Polypro Head, Clear Styrene Bowl
22N	125 (52)	150 (10.5)	2.6	1/2	White Polypro Head, Clear Styrene Bowl
23N	125 (52)	150 (10.5)	4.5	Double	White Polypro Head, Clear Styrene Bowl

\*At 70°F(21°C) \*\*Multiply by 12 to obtain weight per case.



# Valve-in-Head Housings

These housings provide the easiest possible installation and maintenance. Includes same features as Standard Housings plus the following:

- Built in valve has "on", "off", and "by-pass" positions.
- Valve internals of acetal copolymer and valve handle of acrylonitrile butadiene styrene (ABS).
- Pressure vented automatically as handle is turned from "on" to "off".
- Unique head design prevents potential bypassing by not disturbing cartridge seals when valve is operated.

MODEL NUMBER	MAXIMUM OPERATING TEMP. °F (°C)	MAXIMUM OPERATING PRESS. PSI* (KCSH)	SHIPPING WEIGHT (LBS)**	SIZE	HOUSING MATERIAL AND STYLE
11V	125 (52)	125 (52)	4.0	Full	White Polypro Head, Blue Polypro Bowl
21V	125 (52)	125 (52)	4.0	Full	White Polypro Head, Clear Styrene Bowl
23V	125 (52)	125 (52)	5.2	Double	White Polypro Head, Clear Styrene Bowl

\*At 70°F(21°C) \*\*Multiply by 12 to obtain weight per case.

Note: Please contact Keystone Filter for appropriate Valve-in-Head applications.



# Pure Polypropylene Housings

Keystone's pure polypropylene filter housings are ideal for use in all industries where filtered liquids must remain totally free of contamination. These housings are especially essential in the semi-conductor, pharmaceutical and chemical processing industries. They are constructed entirely of virgin polypropylene without color, adders, fillers, reinforcements or lubricants.

In critical applications, these all natural housings insure pure, cost effective filtration of a variety of solvents, acids, alcohols and chemicals without leaching or bacterial build up. Keystone 100% polypropylene housings provide an inexpensive alternative to teflon or fluoropolymer housings.

Features include:

- 100% polypropylene construction.
- Smooth contact surfaces to prevent bacteria and dirt buildup.
- Utilizes a non-lubricated silicone O-ring standard.
- Standard 3/4" NPT connections.

Applications include:

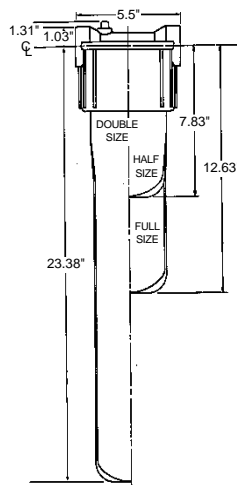
- Deionized water.
- Laboratory instrumentation and equipment.
- Pharmaceutical/cosmetic solvents.
- Electronic solutions and chemicals
- Post filter for reverse osmosis or ultrafiltration.

MODEL NUMBER	MAXIMUM OPERATING TEMP. °F (°C)	MAXIMUM OPERATING PRESS. PSI* (KCSH)	SHIPPING WEIGHT LBS**	SIZE	HOUSING STYLE
51N	125 (52)	150 (10.5)	2.4	Full	w/ pressure relief button
51NX	125 (52)	150 (10.5)	2.4	Full	w/o pressure relief button
51NXD†	125 (52)	150 (10.5)	2.4	Full	w/ tapped drain
51NX-222	125 (52)	150 (10.5)	2.4	Full	w/ 222 O-ring config.
51NXD-222†	125 (52)	150 (10.5)	2.4	Full	w/ 222 O-ring config. & drain
52N	125 (52)	150 (10.5)	1.2	1/2	w/ pressure relief button
52NX	125 (52)	150 (10.5)	1.2	1/2	w/o pressure relief button
53N	125 (52)	150 (10.5)	3.4	Double	w/ pressure relief button
53NX	125 (52)	150 (10.5)	3.4	Double	w/o pressure relief button
53NXD†	125 (52)	150 (10.5)	3.4	Double	w/ tapped drain
53NX-222	125 (52)	150 (10.5)	3.4	Double	w/ 222 O-ring config.
53NXD-222†	125 (52)	150 (10.5)	3.4	Double	w/ 222 O-ring config. & drain

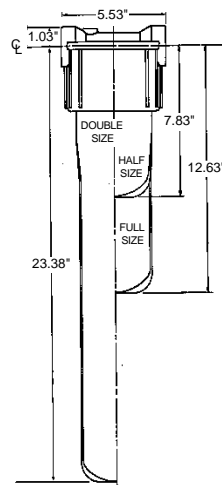
\*At 70°F(21°C)

\*\*Multiply by 12 to obtain weight per case.

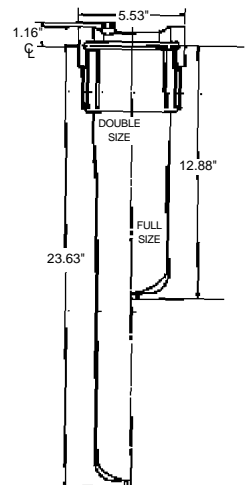
†1/4" NPT top and bottom drain



Housing with pressure relief button



Housing without pressure relief button



Housing with 1/4" NPT vent and drain



## Giant Housings

Request Bulletin GH-1

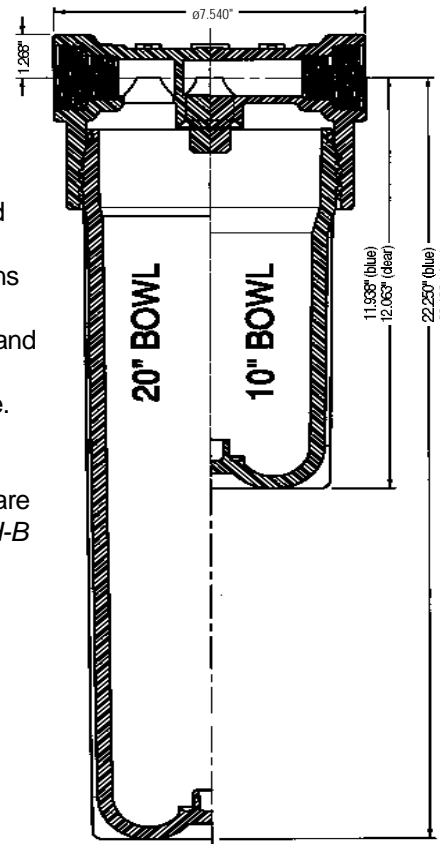
\* The Model BG10, BG20, CG10 and CG20 filter housings are tested and certified by NSF International under ANSI/NSF Standard 42 for material and structural integrity requirements



## Giant Housings

Giant housings offer maximum filtration capacity in a compact unit. These housings feature:

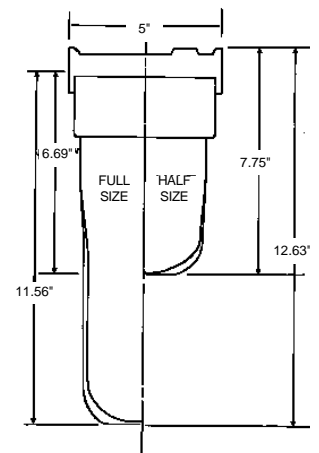
- Talc polypropylene, clear styrene and natural polypropylene construction.
- 1" and 1-1/2" NPT or BSP connections in same head
- NSF approval on talc polypropylene and clear styrene housings.\*
- 125 psi maximum operating pressure.
- Nylon housings for high temperature and high pressure service.
- Bag housings in all materials. (Bags are also available). Request Bulletins GH-B and GB-P.



## Reinforced Nylon Housings

These housings are suitable for high temperature and high pressure service. Features include:

- Distinctive red color.
- High strength glass reinforced nylon head and bowl.
- Standard 3/4" NPT connections.
- Securely retained Buna "N" O-Ring to ensure effective sealing by positive tangential contact.; eliminates accidental misplacement; provides longer life.
- Not available with pressure relief vent button.
- Full testing to industry standards of the Water Quality Association for burst pressure, water tightness and fatigue resistance.



MODEL NUMBER	MAXIMUM OPERATING TEMP. °F (°C)	MAXIMUM OPERATING PRESS. PSI (KCSH)	SHIPPING WEIGHT (LBS)**	SIZE	HOUSING MATERIAL AND STYLE
31	180 (82)	200 (14)	3.2	Full	Red Reinforced Nylon Head and Bowl
32	180 (82)	200 (14)	2.3	1/2	Red Reinforced Nylon Head and Bowl

\*\*Multiply by 12 to obtain weight per case.

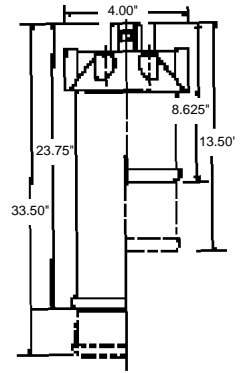


# Stainless Steel Housings

## Single Tube

Keystone's versatile and rugged stainless steel housings are useful for a broad range of applications. Their features include:

- Cast bronze nickel-plated heads with nickel-plated "T" handle cap nut. Shell is a unibody style made of 304 stainless steel.
- "T" handle top nut and petcock bottom drain eliminate the need for tools when changing cartridges.
- Machined groove in underside of head retains Buna "N" gaskets for positive sealing.
- 3/4" NPT connections are standard. 1" NPT is also available



Allow a minimum of 2 1/2" clearance for cartridge changing

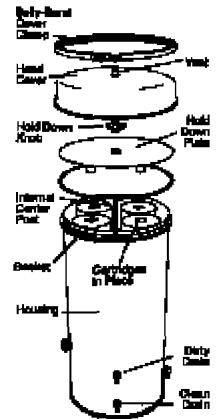
MODEL NUMBER	RATED CAPACITY GPM (LPM)	MAXIMUM OPERATING PRESS. PSI* (KSCM)	DIMENSIONS (IN.)		NUMBER OF CARTRIDGES	PIPE SIZE (NPT)	SHIPPING WEIGHT LBS.
			HEIGHT	DIAMETER			
41	10(38)	250(17.5)	13.5	4.0	1	.75	7
42	5(19)	250(17.5)	8.625	4.0	1	.75	5
43	20(76)	250(17.5)	23.75	4.0	2	.75	10
44	30(114)	250(17.5)	33.5	4.0	3	.75	12

\*To 275° F(136°C)



## Multi-Tube

- High quality 304 stainless steel construction with epoxy coating on outside of housing.
- Belly-band clamp closure is included for easy cartridge change.
- 1/2" drains are provided on clean and dirty sides.
- Larger multiple cartridge housings with connection sizes up to 3" flange are also available.
- Additional exterior finishes are available; optional electro polished stainless steel is shown at left.



MODEL NUMBER	RATED CAPACITY GPM (LPM)	MAXIMUM OPERATING PRESS. PSI* (KSCM)	DIMENSIONS (IN.)		NUMBER OF CARTRIDGES	PIPE SIZE (NPT)	SHIPPING WEIGHT LBS.
			HEIGHT	DIAMETER			
414	40(152)	150(10.5)	19.25	10.0	4	2.0	20
434	80(304)	150(10.5)	29.0	10.0	8	2.0	30
444	120(456)	150(10.5)	38.75	10.0	12	2.0	40
4312	240(912)	150(10.5)	29.0	17.0	24	3.0	125
4412	360(1368)	150(10.5)	38.75	17.0	36	3.0	140
4512	480(1824)	150(10.5)	49.0	17.0	48	3.0	160

\*To 300° F(150°C)

Above rated flow capacities based on sediment removal with a 10 micron pleated filter cartridge  
Standard housing gasket is Buna "N"; other materials on request.



## Cartridges

Keystone Filter manufactures a wide variety of replacement cartridges that are interchangeable in virtually every style of nominal 2<sup>3</sup>/<sub>4</sub>" diameter cartridge filter housing. Cartridges are available in a variety of materials including cellulose, activated carbon, microfiberglass and polypropylene. Keystone's ALL-PPRO pleated cartridges feature all polypropylene construction in nominal ratings from 0.1 to 30 micron, with end caps that will fit all standard and sanitary style housings. Pleated cartridges are stocked in single and continuous multiple length configurations. Activated carbon cartridges are available in convolutely wound or granular filled constructions.

For additional information, request Bulletin 08P, 08FP02, 08-HP and 08-CA.

- LONGER LIFE
- HIGHER FLOW RATE
- LESS PRESSURE LOSS
- UNIQUE, UNIVERSAL DESIGN



## Custom Capabilities

Whether you have firm specifications or only a general concept, we can work with you to design and manufacture your special filter. We can function as a custom pleater or as a fabricator of complete cartridges. Flexibility in our manufacturing operation provides shorter lead times and lower tooling costs.

Maintaining regular contact with leading media suppliers assures that we keep current with latest developments in filter media technology.

More than two decades of experience in the design and fabrication of numerous configurations can be put to work to find the optimum solution to your filtration problem.

For additional information, request Bulletin CB 200.

## Warranty

We warrant each new Keystone Water Filter to be free from defects in material and workmanship for a period of one year from date of purchase in normal use as per these instructions. Our obligation is to repair or replace any parts which upon our inspection prove to be defective in materials or workmanship. Filters must be returned prepaid to your distributor or to our Hatfield, PA plant. This warranty does not apply to any filter damaged or broken due to faulty installation, misuse, or improper handling. Nor is it intended to cover any labor charges involved in the replacement of said filter.



## Keystone Filter Division

2385 North Penn Road, Hatfield, PA 19440

Toll Free: (800)822-1963, FAX: (215)997-1839, E-mail: [filters@keystone-filter.com](mailto:filters@keystone-filter.com)

Web Sites: [www.met-pro.com/Keystone.html](http://www.met-pro.com/Keystone.html) OR [www.thomasregister.com/keystonefilter](http://www.thomasregister.com/keystonefilter)

